



EXHIBITOR MANUAL



JUNE 6, 2010

Outside/across from Philadelphia Art Museum
Intersection of Kelly Drive & Pennsylvania Avenue

Produced by:

Pro Cycling Tour, LLC
in association with
D & D Expositions & Seasick Active Lifestyle Marketing
203 West Chestnut Street
West Chester, PA 19380
(856) 626-3226 Phone
(856) 626-3289 Fax



PHILADELPHIA CYCLING, HEALTH & FITNESS SHOW

Information for Sunday, June 6th at the Race

EXPO NEEDS

All vendors requiring additional expo needs such as tents (\$200), tables (\$20), chairs (\$5), and electricity (cost varies due to needs) must contact **Jeff Stoner** (858-259-1501) to reserve these logistical needs.

EXPO LOCATION

The expo is located at the corner **of Pennsylvania Ave and Art Museum Dr** (2403 Pennsylvania Avenue).

If you are using a navigation system to guide you to the expo, you will want to use the address 2403 Pennsylvania Avenue, Philadelphia, PA.

HOTEL

The official hotel Sheraton Philadelphia City Center is located within walking distance of the race's start/finish line. **The special race rate is available until May 31, 2001 at noon.** For any rooms booked after this date, the race rate cannot be guaranteed.

Hotel Address: Sheraton Philadelphia City Center
17th & Race Street
Philadelphia, PA 19103

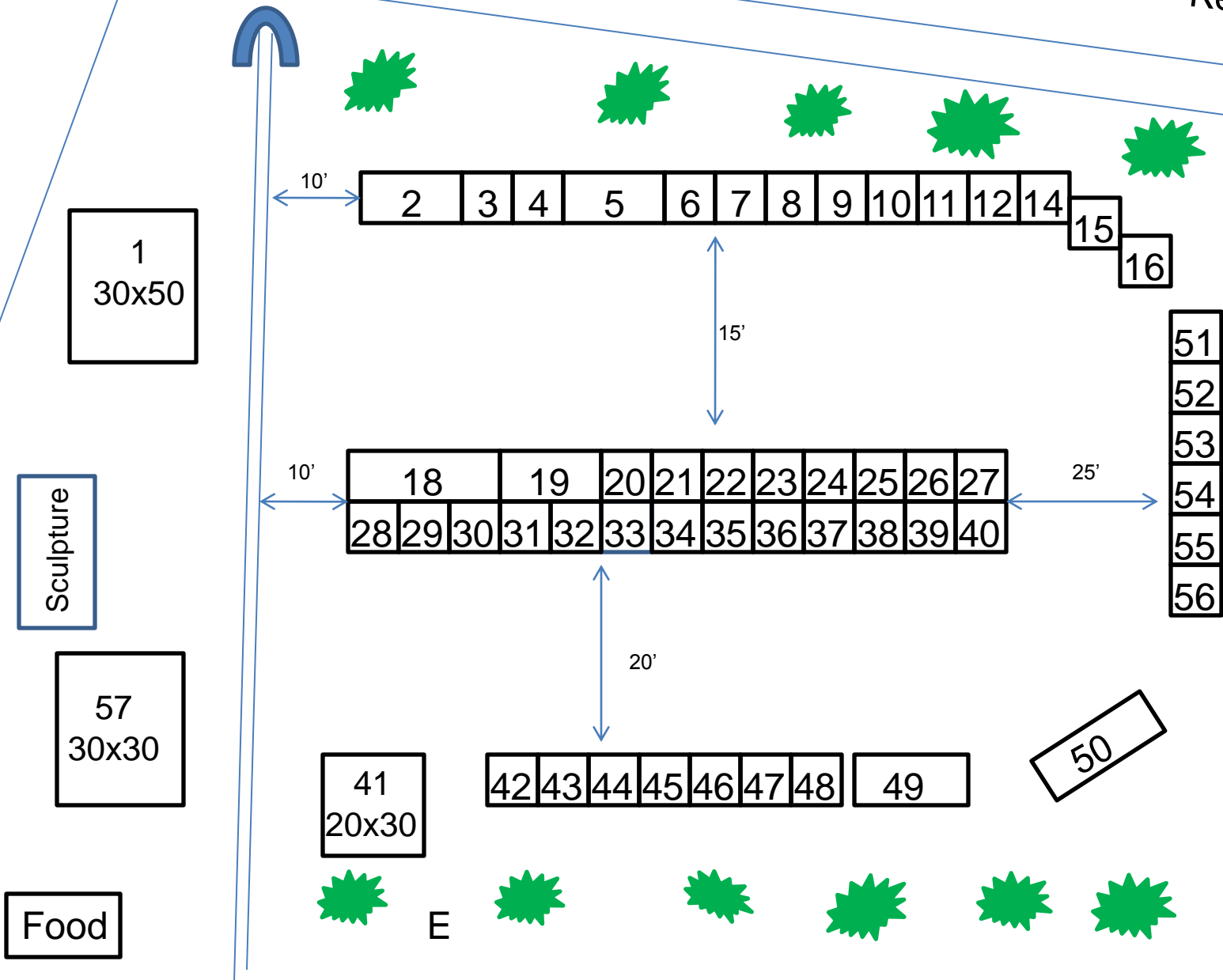
Race Rate: \$99.00 plus tax per night

Reservations through: All reservations can be made through the event website:
http://procyclingtour.com/Hotels.htm?pab=1_3

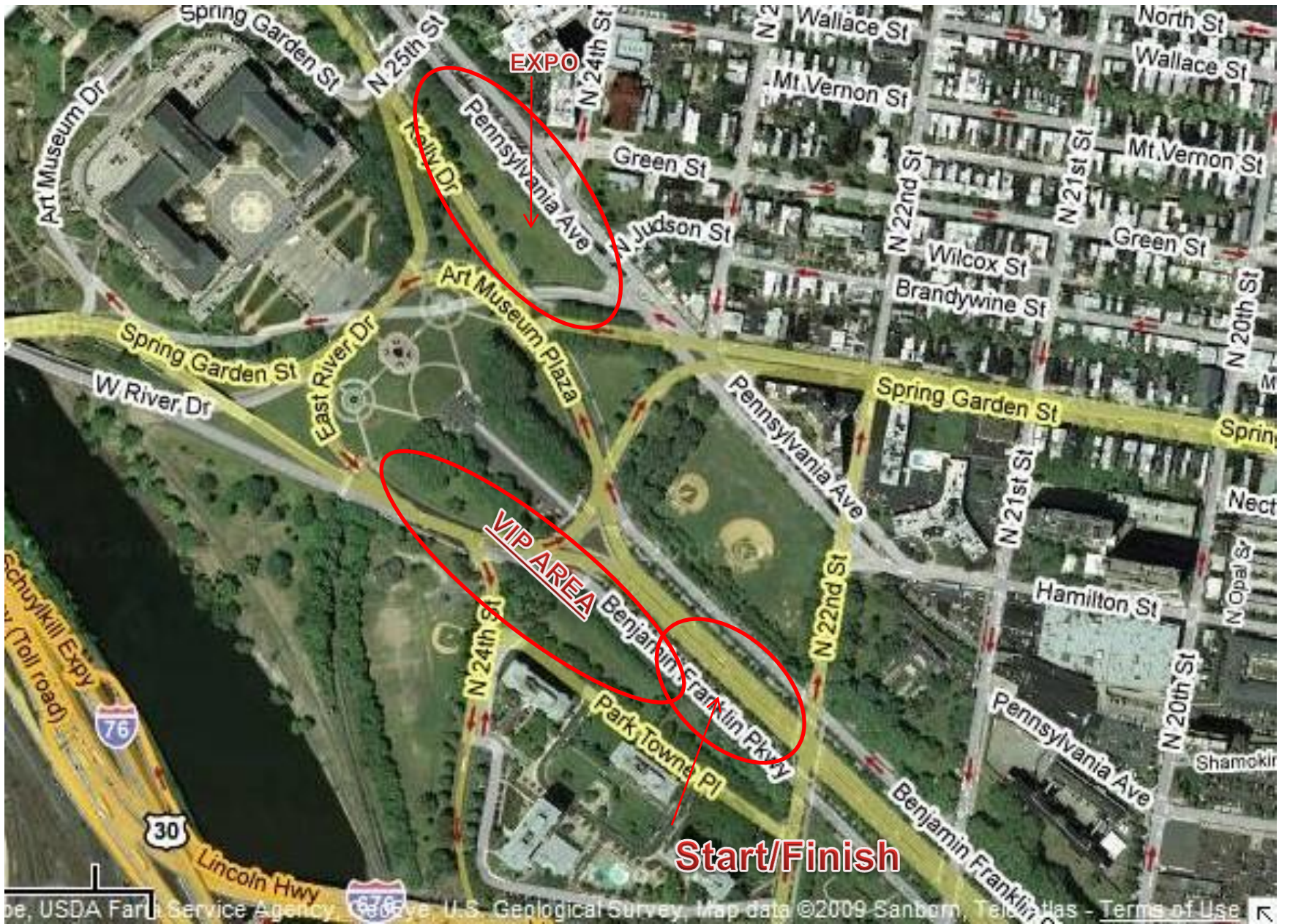
For questions relating to the hotel or the reservations, please contact

Attendee Housing Bureau
(888) 252 – 6443
admin@attendeez.com

Kelly Ave



Pennsylvania Ave- Vendor Load-in



EXPO

VIP AREA

Start/Finish